



# St. John Lutheran Church

FREEDOM TOWNSHIP

16-035 CO. RD. U • NAPOLEON, OH 43545

Serving Christ in Freedom  
*Worship • Stewardship • Mission*

January 19, 2014

VOL. 79

NO. 3

Rev. Stephen J. Niermann, Pastor  
Miss Mary K. Rettig, Principal

Church: 419-598-8961 Home: 419-598-8181  
School: 419-598-8702 Home: 419-966-6160  
Church Website: www.sjl.org

## **SECOND SUNDAY AFTER THE EPIPHANY**

Sermon & Text: "The Blame Game and the Lamb of God" *John 1:29-42*

Order of Service: *Divine Service, Setting Three (LSB pg. 184)*

Hymns: 795 ~ 550 ~ (Communion: 606, 809, 702) ~ 600

Adult Hand Bell Choir: "How Firm the Foundation"

\*\*\*\*\*

### **WELCOME TO OUR VISITORS**

*Welcome to St. John Church. We thank God for this time together! We pray that the grace of God will heal your hurts; that the strength of God will give you courage to face the work before you; that the power of God will prepare your way; and that the peace of God will keep you secure and steady in Christ Jesus. If you are a visitor, please fill out the Rite of Fellowship card from the pew rack in front of you and pass it to the center aisle during the offering this morning.*

\*\*\*\*\*



### **SERVING IN GOD'S HOUSE THIS MORNING**

- ✘ Renee Petzoldt, *Organist* ✘ Lexi Woods & Lydia Schroeder, *Acolytes* ✘
- ✘ Dan & Deb Wachtman, *Greeters* ✘
- ✘ Delbert & Marian Damman, *Visitation* ✘
- ✘ Dave VonDeylen, Dennis Showman, Dean Badenhop, Rich Elling, *Ushers* ✘
- ✘ Diane VonDeylen, LouAnn Rosebrock, Jeannette Bostelman, *Altar Guild* ✘

**ADULT BIBLE STUDY** is cancelled today due to the Voters' Meeting following our worship service. We will resume our study of *Engage Bible Study/Movie Series* next Sunday. Join us then!

**VOTERS' ASSEMBLY** will be held today in the sanctuary following worship. Agenda items tentatively include: 1) Endowment Fund Report and Distributions; 2) Audit Committee Report; 3) Principal's School Report; 4) Call for a 145<sup>th</sup> Anniversary Committee.

**2013 CHURCH ANNUAL REPORT** – It's time to get your reports ready for the 2013 Church Annual. The officers of the different organizations are asked to write up a summary of the year's activities along with a financial report. If you need contribution information prior to the distribution of the Annual Report, give *Karen Rosebrock*, a call at 419-592-1150. **Reports are due Jan. 21<sup>st</sup>!**

<b>In God's House This Week</b>		<i>Online church calendar: www.DynaCal.com/sjl</i>
<b>Date</b>	<b>Time</b>	<b>Activities</b>
Today	9:00 AM 10:15AM 10:30AM 1:00 PM	Communion Service Voters' Meeting; Sunday School; "Time To Spare" PTL Soup & Pie Dinner ( <i>serving until 1:00 PM</i> ) B-ball: Gr. 4-6 Girls; 2:15 PM Gr. 4-6 Boys; 3:30 PM Gr. 7&8 Girls; 4:45 PM Gr. 7&8 Boys vs. St. Paul - Napoleon (H)
Mon.		NO SCHOOL – <i>Martin Luther King, Jr. Day</i>
Tue.	8:35 AM 9:00 AM 5:00 PM 7:00 PM	Napoleon Public Library (Gr. K-8) Exercise Class in gym B-ball: Gr. 7&8 Girls; 6:15 PM Gr. 4-6 Girls vs. St.Pats-Bryan (H) Building Committee Meeting
Wed.	6:15 PM 6:45 PM 7:45 PM	Jr. High Confirmation Class ( <i>6:15 – 7:30 PM</i> ) Adult Hand Bell Practice Adult Choir Practice
Thurs.	9:00 AM 5:00 PM	Exercise Class B-ball: Gr. 4-6 Boys; 6:15 PM Gr. 7&8 Boys vs. Trinity-Toledo (H)
Sat./Sun		Gr. 4-6 Girls in Bethlehem Lutheran Basketball Tournament in Indiana
Sun.	9:00 AM 10:15AM	<i>National Lutheran Schools Week (Sunday through Saturday)</i> Worship Service Adult Bible Class; Sunday School; "Time To Spare"
Mon.- Sat.	7:20 AM	Morning Meditations, WONW 1280 AM Speaker: <i>Rev. Joshua Schmidt</i> , St. John Lutheran, Defiance

**MATTERS FOR PRAYER** – Please keep these people in your prayers:

- Our Homebound Shut-Ins: *Stan Moll, Marian Fitzenreiter, and Donald Landry* dealing with various health issues
- Pauline Dishop* and *Marie Damman*, residing at The Lutheran Home
- Magdalena Volkman*, residing at Heartland Nursing Home, Wauseon
- Lucy Rosebrock*, residing at GlennPark of Defiance
- Marian Buchhop* and *Annalou Brodman*, residing at Country View Haven
- Helen Norden*, residing at Greenbriar Assisted Living, Birmingham, AL
- Sue Landry*, recuperating at Twin Rivers Nursing Home, Defiance, after hospitalization
- Servicemen and women*, Justin Atkinson, Kyle Elling, Jason Rohrs, and Emily Niermann
- Arnold Bischoff*, recovering at Golden Living Center – Northcrest, Napoleon
- Don Dickmann*, recovering at Golden Living Center – Northcrest, Napoleon, following surgery to insert a feeding tube this past Wednesday
- Edwin Rosebrock*, at home dealing with health issues at this time

**LOST & FOUND ITEM:** If you were a hostess for the "Advent By Candlelight" in December and are missing two black table linens, they are on the coat racks by the gym. Please stop by and pick them up at your convenience.

**SOUP & PIE DINNER** – The PTL Soup & Pie Dinner is being held today with serving from 10:30 AM to 1:00 PM, in the fellowship hall. On the menu will be *Chili Soup, Noodle Soup, Hot Dog, Sloppy Joe Sandwich, a Salad and Dessert Bar, and Beverage*. Freewill Offering! Bring your own containers for carryout. In the afternoon enjoy watching some basketball games in our gym starting at 1:00 PM against St. Paul Lutheran. COME AND SUPPORT OUR EAGLE TEAMS!

**CHRISTMAS THANKS:** The committee that decorated the church for Christmas also wanted to offer a “BIG THANKS” to *Jeff & Matthew Buchhop* for coming to their aid in assembling the church’s Christmas tree this year. Your time and effort was a true blessing to us...and the church.



And another thanks to *Alex Gruenhagen, Jeff Buchhop,* and the *LYF members* who gave of their time to assemble the nativity scene outside the church.

**ENDOWMENT FUND REPORT – Exciting news!** It will be reported in the voters’ meeting this morning that the *St. John Endowment Fund* in 2013 generated over \$38,000 in distributions. Enclosed in today’s bulletin is the full report. Please bring this report with you to the voters’ meeting where we will discuss and approve the distributions and the proposed uses of this money. Please take special note of the back side of this report that lists all the gifts given since the fund was established in 2002. The gifts are adding up to make a real difference. ***If you have not yet included the St. John Endowment Fund in your estate plans, please consider doing so. If you don’t already have an estate planner, Eileen Fitzenreiter is always willing to assist you. You may also speak with Dave VonDeylen, our endowment fund administrator, for further guidance.***

**NEW KEY SYSTEM BEGINNING IN FEBRUARY** – Beginning Feb. 1<sup>st</sup> the new electronic lock/key system will be turned on. This system has been installed for the security of our school students. It’s going to take some getting used to for everyone, so please remember --- patience is a virtue! Here’s what you need to know about the system.



- Old keys will no longer function, except in the narthex entry doors at the carport.
- Firewall doors from the church to the school will also be electronically locked.
- New electronic key fobs will permit access only during certain hours as programmed.
- Only staff key fobs will work during school hours. All others must enter the school through the gym entrance and use the buzzer system.
- Service people and organizations will receive keys fobs programmed for certain hours.
- Users need to be aware that their key activity will be logged by the computer.

**NEW GREETER (yellow), ALTAR GUILD (pink), AND USHER (blue) SCHEDULES:** The 2014 Greeter, Altar Guild, and Usher schedules are ready to be picked up from the table in the narthex. Thank you to all who have volunteered to serve on these teams – you are a blessing to us all! If you are still interested in serving God’s people here at St. John in a way that is much needed and appreciated, please contact the church office.

<u>FINANCIAL FACTS:</u>	<u>Home Fund</u>	<u>Synod &amp; Missions</u>	<u>Building Fund</u>
Weekly Need	\$9,792.78	\$500.00	\$961.54
Rec'd 1/12/14	\$8,333.00	\$200.50	\$800.50

ATTENDANCE: 1/12/14 – 245

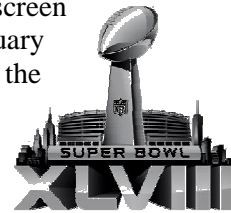
MEMORIALS for Norma Dietrich: St. John Building Fund - \$980.00; St. John Endowment Fund (School Acct.) - \$72.00; St. John LWML - \$325.00



SANCTUARY STAINED GLASS EXPLORATORY COMMITTEE – After discussion through the years, the council moved last Tuesday evening to assemble an exploratory committee to look into the possibility of installing stained glass windows in the sanctuary. The committee’s task would be to explore various stained glass options and costs, and report its findings to the voters. If you would like to serve on this committee, please speak with congregational president *Craig Drewes* or *Pastor Niermann*.

**2014 IS AN ANNIVERSARY YEAR FOR ST. JOHN!** 145 years ago, in August of 1869, our congregation was founded. We are planning to celebrate this anniversary on August 17 of this year. In addition, we want to prepare a 145<sup>th</sup> Anniversary edition of a congregational portrait directory. Would you consider serving on a committee to make these plans? Please indicate your willingness at today’s voters’ meeting or speak with congregational president *Craig Drewes*.

**SUPERBOWL PARTY** – Forget watching the Superbowl on that puny 50-inch screen at home. Join us for the first annual **St. John Superbowl Party** on Sunday, February 2<sup>nd</sup> at 6:00 pm. and watch the game on a 15-foot screen! We’re going to clear out the north end of the fellowship hall so you can bring your favorite lawn or folding chair and watch the game with your friends from church! And if you’re only moderately interested in the game, the other end of the fellowship hall will be set up for fun and socializing --- please bring decks of cards or your favorite board games. It’s fun for all!



- **SNACKS** – no Superbowl Party is complete without snacks, so we’re planning a “Snack Potluck.” Bring a snack to share, and remember there are plenty of outlets for plugging in crock pots, etc.
- **BEVERAGES & CONCESSIONS** – The LYF youth in partnership with the boosters is planning to have beverages and limited concessions, including popcorn; proceeds to the LYF.
- **FOR THE CHILDREN** – If the kids aren’t interested in the Superbowl, don’t let that keep you away. The LYF is planning a movie for them and some gym activities.

**MITES & LWML MEETING:** It is 2014...and the LWML *Mite-y Socks* are back! These are tiny little baby socks, with instructions attached, that you can fill with coins (*dimes*) throughout the year. They are available on the narthex table. These *Mite-y Socks* are a means for all of us to help out the LWML Mite program in a big way with very little effort. Pick up your sock today!

Our next LWML Meeting will be on Tues., January 28<sup>th</sup> starting at 7:00 PM. Pick up a copy of the Quarterly and Odes from the table in the narthex.

**CONGRATS TO GR. 7&8 GIRLS BASKETBALL TEAM:** The St. John 7<sup>th</sup> & 8<sup>th</sup> Grade Girls took second place in the Bethlehem Invitational Basketball Tournament this past weekend in Ossian, IN. They played five games and had only 1 loss. Great Job!!!

**NATIONAL LUTERAN SCHOOLS WEEK:** NLSW is scheduled for Jan. 26 – Feb. 1, 2014. There will be various extra activities going at school that week, so stay tuned in the weekly newsletter, church bulletin, and through your child's teacher's bulletin board on FastDirect for more information.

**HELP NEEDED:** The sports program is in need of volunteers to work the clock and/or scoreboard for the home basketball games. If there are several volunteers, we can work around your busy schedules and make it work for all of us. Please contact *Jason Foor* at 419-906-5074 or by email at [jyfoor@gmail.com](mailto:jyfoor@gmail.com).

**ST. JOHN LUTHERAN SCHOOL OPEN HOUSE** is planned for grade levels PS-8 on Wed., February 5<sup>th</sup>, from 6:30 to 7:30 PM, for families who would like to come and look at our school and discuss the possibility of sending their child(ren) here for their education. If anyone in the congregation might know of prospective students for Grades PS-8, please be sure to pass this information on to them. There will also be refreshments provided by the School Board.

**ST. JOHN SCRIP:** Beginning January 2014, SCRIP orders will be placed once a month on the 2<sup>nd</sup> Wednesday of each month. The next "turn in date" for SCRIP orders is Wed., Feb. 12<sup>th</sup>. These cards will be available the first part of that next week. Contact *Karen Gerken* at 567-454-0087 with any questions about Scrip.

**2014 LUTHERAN ANNUAL** – We are now taking orders for the 2014 Lutheran Annual. It will give you the current addresses, phone numbers, emails, and websites of churches, pastors, teachers, etc. Cost is \$24.00 each. Call the church office to order your copy. Deadline is Fri., Jan. 24<sup>th</sup>.

**EXERCISE CLASS:** Need to work off a few pounds after the holidays or just want to exercise your heart? St. John hosts an exercise class in the gym. Classes are Tuesdays and Thursdays from 9:00 - 10:00 AM and the cost is \$5 per class. This is a light aerobics & weights, and strengthening program.

**USE OF THE FELLOWSHIP HALL** – If you would like to use the Fellowship Hall for any occasion or would like to borrow tables or chairs, on a certain date this year, **please contact the church/school office at 419-598-8961 or 419-598-8702**. In addition to calling the office, you may want to check the online church calendar at <http://www.dynacal.com/sjl/>.

✂ ✂ ✂

#### **FOOD FOR THOUGHT...**

***"It's not whether you win or lose, it's how you place the blame."***

*~ Oscar Wilde ~*

*"...and the LORD has laid on him the iniquity of us all." (Isa. 53:6)*

**THE LUTHERAN HOUR** – The Lutheran Hour Ministries can be heard on several radio stations in our area. They cover many interesting topics relevant to today’s issues. Broadcasts can be heard Sundays on: Holland’s WPOS 102.3 at 7:00 AM; Archbold’s WMTR 96.1 at 7:30 AM; Defiance’s WONW (AM)1280 at 10:30 AM; Napoleon’s WNDH 103.1 at 12:00 PM.

**“WORSHIP FOR SHUT-INS”**: “Worship for Shut-Ins” has joined the WLMB-TV40 line up again. If you have a relative or friend who is homebound, hospitalized, or recovering from a recent surgery, you may suggest this 30-minute LCMS worship service to them. So tune in to WLMB-TV40 on Sundays at 6:30 AM (*note time change*) and get your Sunday started off right!

**PROJECT CONNECT** – There are many free booklets in the rack in the narthex. Be sure to check for some good reading. Some titles are: “*Why Do Bad Things Happen To Me,*” “*Has God Abandoned Me,*” “*Dealing with Depression,*” “*Coping with Cancer,*” “*Who Is Jesus,*” “*Just Stress?*”, “*Overcoming A Painful Childhood,*” “*Where’s God in All of This?*”, “*Why Should I go to Church?*” and many more. These booklets are furnished through the Lutheran Hour Ministries.

**‘BREAD FROM HEAVEN’** – A note to **St. John members needing food assistance** – If you could use food assistance from our food pantry, please speak with *Pastor Niermann*. We are required by the *Northwestern Ohio Food Bank* to keep a record with your name, but pastor will keep your record separate and absolutely confidential.

Contributions can be given at any time: monetary gifts can be given to the *Good Neighbor Fund* (note it on your envelope), and **food gifts such as canned fruit (peaches, pears, pineapple), cereal, mac & cheese, jelly, spaghetti’s, tuna, and canned chicken are desperately needed.** Any and all contributions are always greatly appreciated. Food items can be placed in the box near the archives display.

**OHIO ORPHAN GRAIN TRAIN**: The Ohio Division OGT is located in the north end of the Culligan Water Conditioning building on Independence Drive in Napoleon. Someone is usually there to receive items on the first Tuesday of the month from 9:00-11:00 AM. If you need to drop off items at another time, please contact *Nancy Helmke* (419-758-3539), *Diann Meyer-Grieser* (419-267-3485), *Vicki Grieser* (419-445-2986), or *Harold Behrmann* (419-598-8311) and they will be happy to meet you and open the facility to receive your donations! PLEASE do not drop off items at the warehouse when it is closed. Thank you!

**LIONS RECYCLE FOR SIGHT** – *How You Can Help?* If you have used **prescription or nonprescription** glasses or sunglasses in your drawers, desks, or closets, you can donate them now! Children's glasses are especially needed. Both plastic and metal frames are accepted. There is a box on the table in the narthex for the collection of these used glasses.

**PRAYER CALENDAR NOTE**: Please be aware that if you would like your wedding anniversaries printed on the prayer calendars, you will have to post them each year. Just list them on the blank calendars posted on the bulletin board in the narthex throughout the year. Thank you!